



Dynetcom Control Console Equipment Management System

The Dynetcom Control Console (DCC) software is a powerful, user friendly PC based software package employing a graphical user interface (GUI) for management of a wide range of Dynetcom patching and switching equipment. The DCC manages the Enterprise Access System (EAS) product range for testing, monitoring, and reconfiguring point to point data circuits, Wide Area Networks (WAN), and Local Area Networks (LAN). In addition, the DCC can control Dynetcom's Mark II A/B Switching products. The DCC uses realistic and functional graphical representations of the equipment in a Windows*/NT* environment to quickly and easily monitor network signals, set up tests and switch in spare equipment.



In this example the DCC displays an EAS A/B chassis front panel. The status of each channel's interface is displayed continuously, as is the A or B fallback position. A drag and drop menu on the top of the screen allows the user to sue the integral buses for monitoring or testing any circuit. The patch icon allows for an electronic patch. Double click on the DCE port to view the full interface and alarm status.

The DCC provides powerful utilities to quickly generate equipment databases of port names, alarm definitions, and equipment configurations. Existing configurations can be uploaded in the DCC database. Several standard report formats are also provided and using Windows tools DCC database information can easily be included in other documents.

The DCC and Dynetcom's patching and switching hardware are examples of Dynetcom's continued commitment to provide the network user with fast, powerful, and reliable tools to manage data communication networks.

Communication solutions from
NSGDatacom
extend. evolve. innovate.

Designed for easy and intuitive control management of Dynetcom's range of EAS patching and switching products including Dynetcom's Dynaswitch® Mark II A/B product. The DCC is a PC based, Windows*/NT* compatible, GUI software package. Features like the real time command and response protocol analyzer, alarm reporting and logging, multiple site control, and Ethernet LAN utilization alarming/monitoring are just a few of the many features that demonstrate the power of this software.

Feature List:

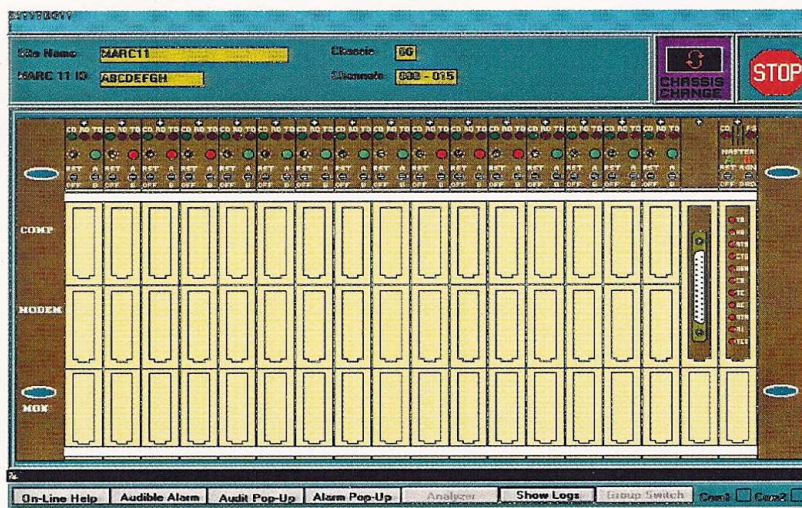
- On-line help
- Detailed help
- Supports EAS WAN patching/switching products
- Supports the EAS LAN products
- Ethernet utilization monitoring and alarming
- WAN interface alarming and monitoring
- Supports up to 255 chassis
- Local or modem remote control
- Graphical user interface
- Multiple levels of user authority
- Logon and user password security
- Database maintenance utilities
- Easy report generation

Specifications:

Workstation Requirement:

- 386/486 or Pentium PC
- 64 MB Ram minimum
- 20 MB free hard disk space
- 1 serial port minimum
- Microsoft compatible mouse
- Printer for printed reports
- Windows 95 (or higher), or Windows NT o/s
- AT command modem for remote site

Dynetcom Control Console
Showing Dynaswitch Chassis



*Both Windows and NT are registered trademark of Microsoft Corporation

NSGDatacom

www.nsgdata.com

3863 Centerview Drive
Chantilly, VA, 20151-3232 USA
Phone: +(1) 703 793 2000
Fax: +(1) 703 793 2001

7435 New Technology Way
Frederick, MD, 21703 USA
Phone: +(1) 301 662 5926
Fax: +(1) 301 694 6279

The Brackens, London Road
Ascot, Berkshire SL5 8BE, UK
Phone: +(44) 1344 893 000
Fax: +(44) 1344 891 990